

vtech®

Parent's Guide

**Go! Go!
Smart Friends®**

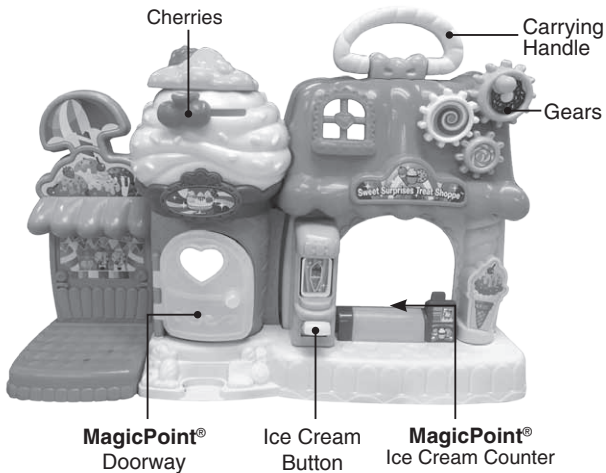
Sweet Surprises Treat Shoppe™



91-003374-002 US

INTRODUCTION

Thank you for purchasing the **Go! Go! Smart Friends® Sweet Surprises Treat Shoppe™** by **VTech®**. Watch Lollie come to life when you place her on the **MagicPoint®** locations! Slide the cherries to spin the whipped topping, press the ice cream button to change the flavor of the day or turn the gears for more fun.



MagicPoint®
Character



Menu Board



Chair



Table



Pop the Dog

INCLUDED IN THIS PACKAGE

NOTE: This toy is not intended for teething.

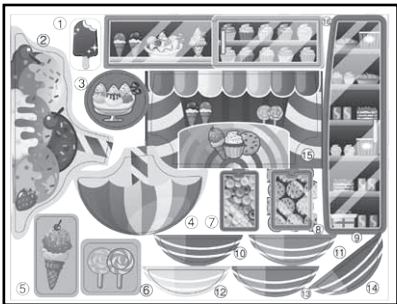
- One VTech® Sweet Surprises Treat Shoppe™
- One MagicPoint® character - Lollie



- One dog
- One menu board
- One chair
- One table



- One label sheet

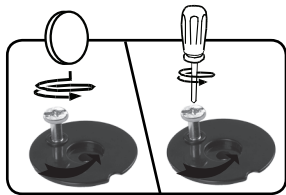


- One parent's guide

Unlock the packaging lock:

There is one packaging lock located on the character:

- ① Use a coin or a screwdriver to loosen the screw.
- ② Pull out the screw with the packaging lock and discard them.



WARNING:

All packing materials, such as tape, plastic sheets, packaging locks, removable tags, cable ties and packaging screws are not part of this toy, and should be discarded for your child's safety.

ATTENTION:

Pour la sécurité de votre enfant, débarrassez-vous de tous les produits d'emballage tels que rubans adhésifs, feuilles de plastique, attaches, étiquettes et vis d'emballage. Ils ne font pas partie du jouet.

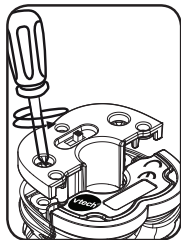
NOTE:

Please keep this parent's guide as it contains important information.

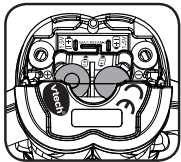
GETTING STARTED

Battery Installation - Character

1. Make sure the unit is **OFF**.
2. Locate the battery cover on the bottom of the unit. Use a screwdriver to loosen the screws.
3. Install 2 new AAA size (AM-4/LR03) batteries following the diagram inside the battery box. (The use of new alkaline batteries is recommended for maximum performance.)



4. Replace the battery cover and tighten the screws to secure.

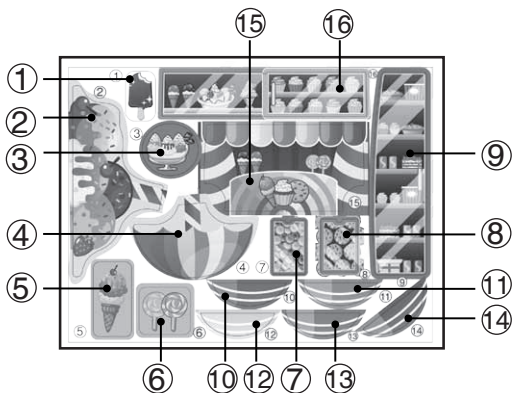


BATTERY NOTICE

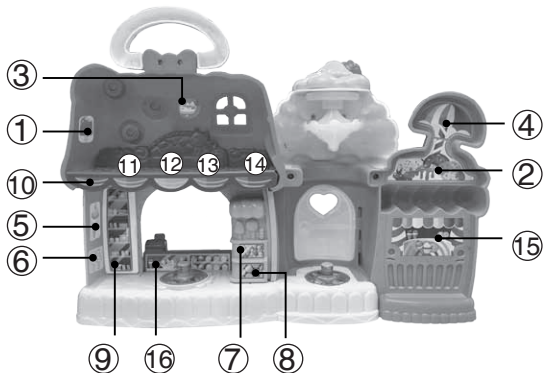
- Use new alkaline batteries for maximum performance.
- Use only batteries of the same or equivalent type as recommended.
- Do not mix different types of batteries: alkaline, standard (carbon-zinc) or rechargeable (Ni-Cd, Ni-MH), or new and used batteries.
- Do not use damaged batteries.
- Insert batteries with the correct polarity.
- Do not short-circuit the battery terminals.
- Remove exhausted batteries from the toy.
- Remove batteries during long periods of non-use.
- Do not dispose of batteries in fire.
- Do not charge non-rechargeable batteries.
- Remove rechargeable batteries from the toy before charging (if removable).
- Rechargeable batteries are only to be charged under adult supervision.

LABEL APPLICATION

Please securely adhere the labels to the playset as indicated below:



Position:

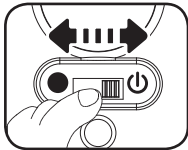


PRODUCT FEATURES - CHARACTER

1. On/Off Switch

The **On/Off Switch** is located on the bottom of the character.

To turn the unit on, slide the **On/Off Switch** to the **ON** (⏻) position. To turn the unit off, slide the **On/Off Switch** to the **OFF** (●) position.



2. Automatic Shut Off

To preserve battery life, the **VTech® Go! Go! Smart Friends® Character** will automatically power down after several minutes without input. The unit can only be turned on again by pressing the **Light-Up Button** or placing it on a **MagicPoint®** location.

The **Light-Up Button** will flash several times and power down when the unit's battery level is low. If this happens, we suggest replacing the batteries with new ones.

ACTIVITIES - CHARACTER

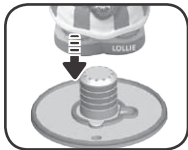
1. Light-Up Button

Press the **Light-Up Button** to hear phrases, songs, melodies and fun sounds.



2. MagicPoint® Locations

Place the **MagicPoint® Character** on the playset's two **MagicPoint®** locations to hear phrases, fun sounds, short tunes and sing-along songs or light up the ice cream counter. The **MagicPoint® Character** can also interact with other **Go! Go! Smart Friends®** playsets (each sold separately)



ACTIVITIES – SWEET SURPRISES TREAT SHOPPE™

1. Ice Cream Counter

The Ice Cream Counter will light up when you place a **MagicPoint® Character** on the **MagicPoint®** location.



2. Doorway

Place the **MagicPoint® Character** on the **MagicPoint® Doorway** location to hear fun phrases.



3. Cherries

Slide the **Cherries** to spin the whipped topping.



4. Gears

Use the knob to spin the **Gears**.



5. Ice Cream Board

Press the **Ice Cream Button** to change the flavor of the day.



6. Doorway

Open and close the **Doorway**.



7. Carrying Handle

Pick the shoppe up by the **Carrying Handle** to take the fun on the go.



8. Accessories

Menu Board, Chair, Table and Dog accessories are included for role-play fun.



SONGS

1. My name is Lollie, I love sweets!
Ice cream is my favorite treat!
2. Mix it, stir it, pour it, bake.
So many treats for us to make!
3. With a bit of magic and a whole lot of fun,
Let's have an adventure with everyone.

MELODY LIST

1. Alexander's Ragtime Band
2. Billy Boy
3. Blow the Man Down
4. Oranges and Lemons
5. Sing a Song of Sixpence
6. To Market, To Market

CARE & MAINTENANCE

1. Keep the unit and its metal parts clean by wiping them with a slightly damp cloth.
2. Keep the unit out of direct sunlight and away from any direct heat source.
3. Remove the batteries when the unit is not in use for an extended period of time.
4. Do not drop the unit on hard surfaces and do not expose the unit to moisture or water.

TROUBLESHOOTING

If for some reason the unit stops working or malfunctions, please follow these steps:

1. Please turn the unit **OFF**.
2. Interrupt the power supply by removing the batteries.
3. Let the unit stand for a few minutes, then replace the batteries.
4. Turn the unit **ON**. The unit should now be ready to play again.
5. If the product still does not work, replace with a new set of batteries.

If the problem persists, please call our Consumer Services Department at 1-800-521-2010 in the U.S. or 1-877-352-8697 in Canada, or by going to our website at vtechkids.com and filling out our Contact Us form located under the Customer Support link. A service representative will be happy to help you.

IMPORTANT NOTE:

Creating and developing **VTech®** products is accompanied by a responsibility that we at **VTech®** take very seriously. We make every effort to ensure the accuracy of the information, which forms the value of our products. However, errors sometimes can occur. It is important for you to know that we stand behind our products and encourage you to call our Consumer Services Department at 1-800-521-2010 in the U.S. or 1-877-352-8697 in Canada, or go to our website at vtechkids.com and fill out our Contact Us form located under the Customer Support link with any problems and/or suggestions that you might have. A service representative will be happy to help you.

Note: This equipment has been tested and found to comply with the limits for a Class B digital device, pursuant to Part 15 of the FCC Rules. These limits are designed to provide reasonable protection against harmful interference in a residential installation. This equipment generates, uses and can radiate radio frequency energy and, if not installed and used in accordance with the instructions, may cause harmful interference to radio communications. However, there is no guarantee that interference will not occur in a particular installation. If this equipment does cause harmful interference to radio or television reception, which can be determined by turning the equipment off and on, the user is encouraged to try to correct the interference by one or more of the following measures:

- Reorient or relocate the receiving antenna.
- Increase the separation between the equipment and receiver.
- Connect the equipment into an outlet on a circuit different from that to which the receiver is connected.
- Consult the dealer or an experienced radio/TV technician for help.

Caution: Changes or modifications not expressly approved by the party responsible for compliance could void the user's authority to operate the equipment.

THIS DEVICE COMPLIES WITH PART 15 OF THE FCC RULES. OPERATION IS SUBJECT TO THE FOLLOWING TWO CONDITIONS:

(1) THIS DEVICE MAY NOT CAUSE HARMFUL INTERFERENCE, AND (2) THIS DEVICE MUST ACCEPT ANY INTERFERENCE RECEIVED, INCLUDING INTERFERENCE THAT MAY CAUSE UNDESIRE OPERATION.

CAN ICES-3 (B)/NMB-3(B)

CLASS 1
LED PRODUCT



PRODUCT WARRANTY

This Warranty is applicable only to the original purchaser, is non-transferable and applies only to "VTech" products or parts. This product is covered by a 3-month Warranty from the original purchase date, under normal use and service, against defective workmanship and materials. This Warranty does not apply to (a) consumable parts, such as batteries; (b) cosmetic damage, including but not limited to scratches and dents; (c) damage caused by use with non-VTech products; (d) damage caused by accident, misuse, unreasonable use, immersion in water, neglect, abuse, battery leakage, or improper installation, improper service, or other external causes; (e) damage caused by operating the product outside the permitted or intended uses described by VTech in the owner's manual; (f) a product or part that has been modified (g) defects caused by normal wear and tear or otherwise due to the normal aging of the product; or (h) if any VTech serial number has been removed or defaced.

Prior to returning a product for any reason, please notify the VTech Consumer Services Department by going to our website at vtechkids.com, filling out our Contact Us form located under the Customer Support link or calling 1-800-521-2010.

If the service representative is unable to resolve the issue, you will be provided instructions on how to return the product and have it replaced under Warranty. Return of the product under Warranty must adhere to the following rules: If VTech believes that there may be a defect in the materials or workmanship of the product and can confirm the purchase date and location of the product, we will at our discretion replace the product with a new unit or product of comparable value. A replacement product or parts assumes the remaining Warranty of the original product or 30 days from the date of replacement, whichever provides longer coverage.

THIS WARRANTY AND THE REMEDIES SET FORTH ABOVE ARE EXCLUSIVE AND IN LIEU OF ALL OTHER WARRANTIES, REMEDIES AND CONDITIONS, WHETHER ORAL, WRITTEN, STATUTORY, EXPRESS OR IMPLIED. IF VTECH CANNOT LAWFULLY DISCLAIM STATUTORY OR IMPLIED WARRANTIES THEN TO THE EXTENT PERMITTED BY LAW, ALL SUCH WARRANTIES SHALL BE LIMITED TO THE DURATION OF THE EXPRESS WARRANTY AND TO THE REPLACEMENT SERVICE AS DETERMINED BY VTECH IN ITS SOLE DISCRETION.

To the extent permitted by law, VTech will not be responsible for direct, special, incidental or consequential damages resulting from any breach of Warranty.

This Warranty is not intended to persons or entities outside the United States of America. Any disputes resulting from this Warranty shall be subject to the final and conclusive determination of VTech.

**Visit our website for more
information about our products,
downloads, resources and more.**

vtechkids.com



TM & © 2017 VTech Holdings Limited.
All rights reserved.
Printed in China.
91-003374-002 ©